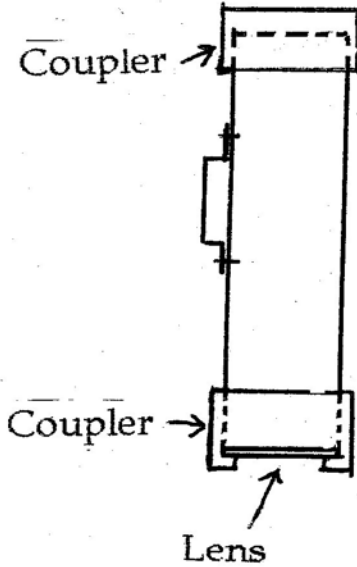


# Make your own Snipe Glass



4" Black PVC 18" – One 2" long  
One 4" Coupler cut in half.  
Use 1 half for the top, 1 for bottom.  
Be sure to cut it to this----->  
You need Plexiglass or glass  
Disk about 1/16" smaller than  
Outside diameter of pipe  
Assemble to water tight seal  
Use clear silicone around lens  
Use Black PVC as it will not  
Produce glare when looking  
Under water

